

# Intelligent Variable Speed Medium Load Pan-Tilt Head HS-YJ025W

## I. Pan-Tilt Head Characteristics

1. The maximum load is 25Kg;
2. The repeated positioning accuracy is  $\pm 0.1^\circ$ ;
4. The shell is made of high-strength aluminum alloy;
5. Adopt worm gear and worm drive, which can be self-locked when power is off;
6. Horizontal continuous rotation of  $0 \sim 360^\circ$ ;
7. Protection grade IP66;
8. Can be upgraded to network pan-tilt head;



## II. Detailed Technical Indicators:

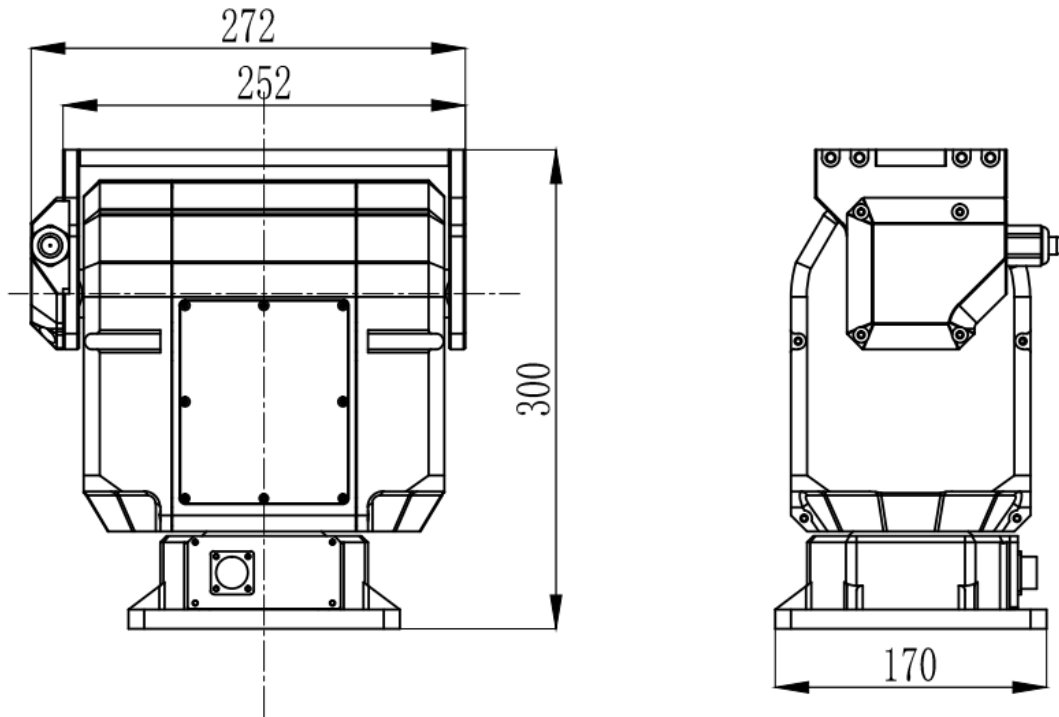
Model	HS-YJ025W
Colour	Ice ash (army green, black, white, * can be customized)
Spin velocity	Horizontal continuous speed change of $0.02^\circ \sim 20^\circ/\text{s}$ (the maximum speed can be selected in the range of $0.02^\circ \sim 55^\circ$ , and the greater the speed, the smaller the load); Pitch is changed continuously from $0.02^\circ$ to $10^\circ/\text{s}$ (the highest speed can be selected from $0.02^\circ$ to $30^\circ/\text{s}$ , and the higher the speed, the smaller the load);
Angle of rotation	Horizontal continuous rotation of $0 \sim 360^\circ$ (optional limited rotation, with the maximum angle of $1^\circ \sim 320^\circ$ ); Pitch- $60^\circ \sim 20^\circ$ (customizable, optional in the range of $-90^\circ \sim 90^\circ$ , the larger the angle, the smaller the load);
Presetting bit	200 Piece
Positioning accuracy	$\pm 0.1^\circ$
Repeatability	$\pm 0.1^\circ$
Self-checking	Power-on self-test (* no self-test option)
Position return	Optional (query return, real-time return)
Pilot switch	*Optional (2 groups, passive, normally open)

Lens preset position	* Optional (support, adaptive to FUJINON, COMPUTAR, KOWA and other lenses)
Lens control speed	* Optional (zoom and focus control speed can be adjusted continuously)
Automatic cruise	2, each with 40 cruise points.
Automatic homing	Automatic homing time of 1 ~ 60 minutes can be set.
Automatic scanning	1 article
Salt spray prevention	* Optional (when the PH value is between 6.5 and 7.2, after 48 hours of continuous spraying, the machine works normally and the surface has no obvious change).
Protocol	PELCO_D((PELCO_P, ModBus-RTU optional))
Communication baud rate	9600bps(2400/4800/115200bps optional)
Communication interface	RS485(RS422/RS232/* Network interface * Wireless remote control optional)
Input power range	DC24V(*DC12V/*AC220V optional)
Power consumption of whole machine	≤60W
Static power consumption	≤5W
Working temperature	-25℃~+55℃,90%±3%, Noncondensation (*-40℃~+55℃ optional)
Storage temperature	-40℃~+65℃
Load (height of center of gravity 50mm directly above the top plate)	20kg (12kg ~ 22kg, with different speeds, angles, heights of gravity centers and different loads)
Measure	272X170X300
Overall weight	11Kg
Bearing mode	Top load (optional side load)
Transmission mode	Worm gear and worm drive
The protection	IP66

grades	
Installation mode	Fixed installation (* car-mounted/* hanging load is optional, and the load capacity is halved when the car is mounted)
Remarks: * The functions marked are extra charges, please know.	

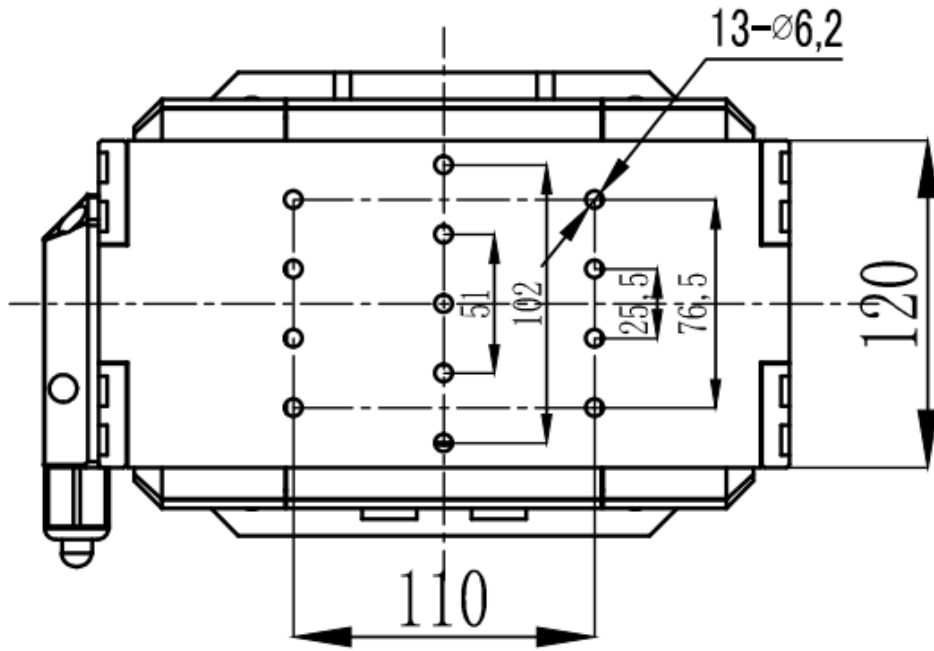
### III. Dimensional Drawing

#### 1) Pan-tilt head outline dimension drawing

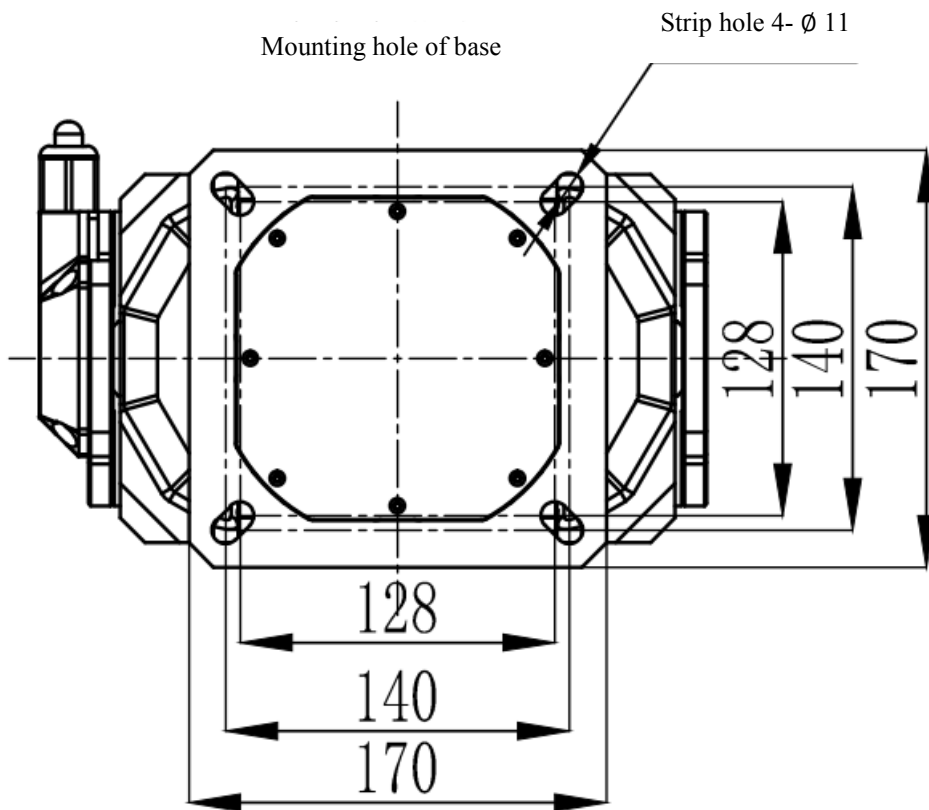


#### 2) Dimension drawing of pan-tilt head roof

Top plate fixing hole (removable top plate)



3) Installation dimension drawing of pan-tilt head base



#### IV. Outside View Drawing

