

Intelligent Variable Speed, High Precision And Heavy Load Pan-Tilt Head

HS-YJ050W-G

I. Pan-Tilt Head Characteristics

1. The maximum load is 50 kg;
2. Pan-tilt head positioning accuracy $\pm 0.01^\circ$;
3. The shell is made of high-strength aluminum alloy;
4. Pan-tilt head adopts worm gear and worm drive, which can be self-locked when power is off;
5. Horizontal continuous rotation of $0 \sim 360^\circ$;
6. Protection grade IP66;

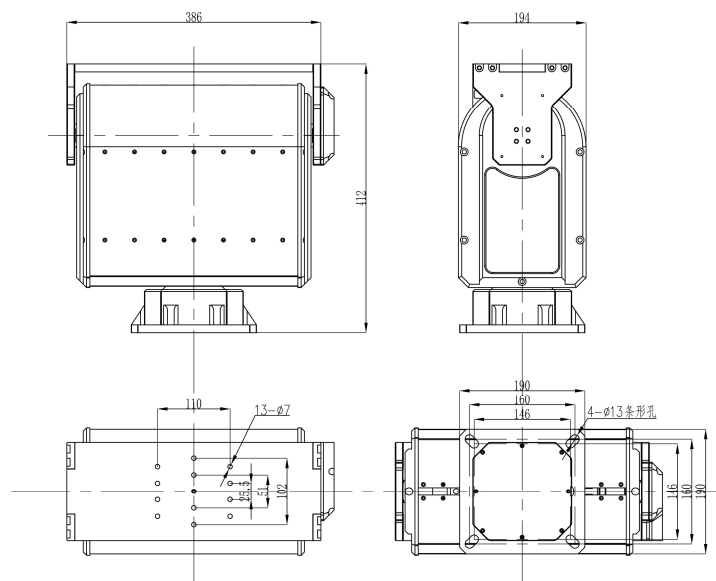


II. Detailed Technical Indicators

| | |
|----------------------|--|
| Model | HS-YJ050W-G |
| Colour | Ice ash (army green, black, white, * can be customized) |
| Spin velocity | 0.01° ~ 12°/s (the maximum speed can be selected in the range of 0.02°-* 30°, and the greater the speed, the smaller the load); Vertical 0.01° ~ 8°/s (the maximum speed can be selected in the range of 0.02°-* 15°/s, and the greater the speed, the smaller the load); |
| Angle of rotation | Horizontal continuous rotation of $0 \sim 360^\circ$ (optional limited rotation, with the maximum angle of $1^\circ \sim 320^\circ$); Vertical- $20^\circ \sim +60^\circ$ (customizable, optional in the range of $-90^\circ \sim 90^\circ$, the larger the angle, the smaller the load); |
| Presetting bit | 200 Piece |
| Positioning accuracy | $\pm 0.01^\circ$ |
| Self-checking | Power-on self-test (* no self-test option) |
| Position return | Optional (query return, real-time return) |
| Pilot switch | * Optional (2 groups, passive, normally open) |
| Lens preset position | * Optional (support, adaptive to FUJINON, COMPUTAR, KOWA and other lenses) |
| Lens control speed | * Optional (zoom and focus control speed can be adjusted continuously) |
| Automatic cruise | 2, each with 40 cruise points. |

| | |
|-------------------------|---|
| Automatic homing | Automatic homing time of 1 ~ 60 minutes can be set. |
| Automatic scanning | 1 article |
| Salt spray prevention | * Optional (when the PH value is between 6.5 and 7.2, after 48 hours of continuous spraying, the machine works normally and the surface has no obvious change). |
| Protocol | PELCO_D(PELCO_P, ModBus-RTU optional) |
| Communication baud rate | 9600bps(2400/4800/115200bps optional) |
| Communication interface | RS485(RS422/RS232/* Network interface * Wireless remote control optional) |
| Input power range | AC220V(*DC24V/*DC12V optional) |
| Working temperature | -25℃~+55℃,90%±3%, Noncondensation (*-40℃~+55℃ optional) |
| Storage temperature | -40℃~+65℃ |
| Load | ≤50kg |
| Measure | Custom size: 406*194*412(L×W×H) |
| Bearing mode | Top load |
| Transmission mode | Worm gear and worm drive |
| The protection grades | IP66 |
| Installation mode | Fixed installation |

III. Dimensional Drawing



IV. Outside View Drawing

